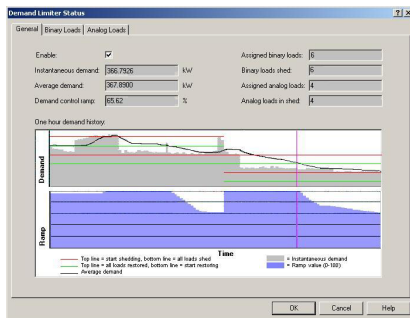
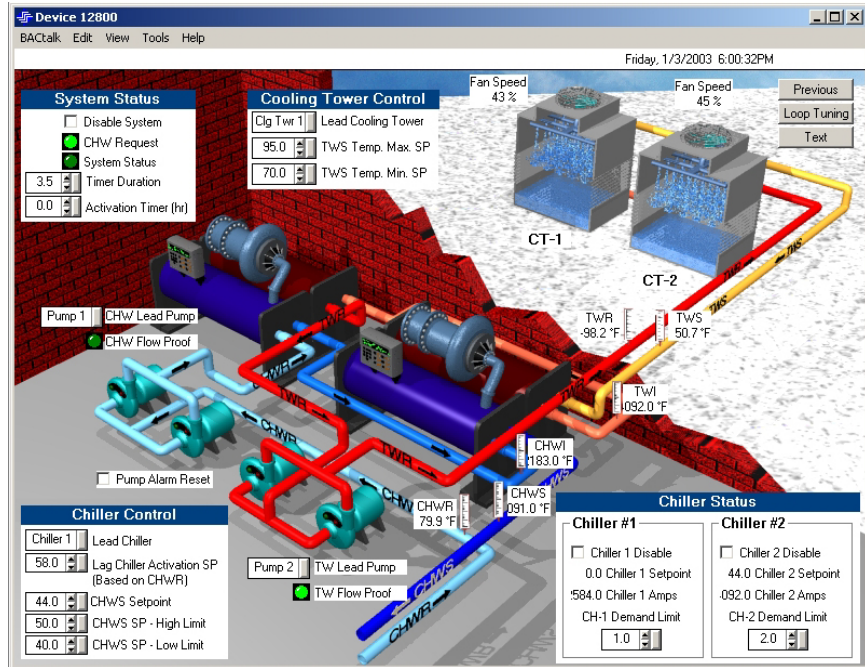




Envision™ for BACtalk®

Features

- Powerful energy management**
 Optimum start ensures efficient equipment start times. Demand limiting offers sophisticated load optimization, and energy logging enables you to monitor progress and savings.
- Tenant activity**
 Automatically detect and log after-hours tenant override activity, then generate tenant bills.
- Custom graphics**
 Three-dimensional, full color, animated data displays can be customized to suit any requirement and easily updated for equipment additions, moves, and changes.
- Networking and connectivity**
 Built-in Internet and wide area network (WAN) capabilities with BACnet/IP. Remote site and roaming access with modem and direct serial connections.



View demand limiting status in real time

Alerton® Envision for BACtalk is powerful operator workstation software for BACnet systems. Use it to manage and control building equipment from a personal computer with unprecedented flexibility and power. Envision for BACtalk communicates with BACnet-compliant devices over an Ethernet LAN or through point-to-point (PTP) serial or modem connections.

Three-dimensional animation and full-color graphics enable access to real-time data and energy management features with simple point-and-click control. As-built drawings, floor plans and specific graphics of HVAC equipment are customized for each site. Import images from CAD programs or virtually any graphics program.

In a multi-building campus, a BACnet Ethernet LAN or IP network can interconnect buildings. For large corporations with dispersed holdings, Envision for BACtalk supports BACnet/IP for building integration across the Internet and wide area networks (WANs). Envision for BACtalk can also connect to remote sites via modem or be installed on a portable computer for direct system access.

These flexible, integrated control options save countless hours and resources. Engineers and technicians can control any building from a single, central operator terminal, and have any number of options for roaming system access.

Envision™ for BACtalk®

Technical data

- **Network and connectivity** BACnet Ethernet, MS/TP, PTP, Annex J BACnet/IP, modem, serial cable.
- **Integration and interoperability** BACnet-compliant. Supports ActiveX interface to other Windows applications.
- **Display capability** Unlimited custom displays and resolution, dependent only on hard disk space and graphics hardware.
- **Security** 100 users maximum, each with unique access privileges. Adjustable auto logout protects unattended terminals.

Software features

- **Scheduling** Schedule weekly, holiday, and event schedules with a graphical calendar editor.
- **Alarms** Alarms display regardless of currently running application. Dialout alarms to remote sites or modems. Customize alarm handling based on alarm type.
- **Trendlogs** View trendlogs in graph or text format with multiple points per log. Archived in database format for compatibility with office applications.
- **Energy logs** Hourly or daily energy use and demand displayed in graph or text format. Archived in database format for compatibility with office applications.
- **Demand limiting** Flexible demand metering supports various media. Shed and restore binary and analog loads according to load priority. Base strategies on time of day or season. View results in real time.
- **Optimum start** Self-tuning optimum start algorithm adjusts equipment start time based on environmental factors, achieving optimum space conditions for occupancy.
- **Tenant activity** Quickly set up and bill tenants for after-hours activity. Email or print tenant bills. View and adjust events before billing.
- **Zones** Set up zones to schedule and control building operations intuitively.
- **Reporting and printing** Extensive reporting capabilities enable you to generate recurring reports on virtually any aspect of system operation.

Ordering information

All Envision for BACtalk software packages include CD-ROM, hardware key, operator's manual, and installation and startup guide.

Item number	Controllers	Operator workstations
ENV-BT-UNL	Unlimited	Unlimited
ENV-BT-MED	150 maximum	3 maximum
ENV-BT-SM	50 maximum	1 maximum

Computer requirements

Recommended (new installations)

- Pentium III 600 MHz or better
- 128 MB RAM or better (256 MB for Visio / VisualLogic™)
- 2 GB hard disk or better (large jobs may require 10 GB or more)
- High-performance graphics adapter
- Network interface card (10/100 Mbps)
- Parallel printer port and serial port
- Visio 2002 (optional)
- Keyboard, monitor, mouse, 3.5-inch disk drive, CD-ROM drive
- Windows 2000 Professional or Windows XP

Minimum (existing system upgrades)

- Pentium II 400 MHz
- 64 MB RAM (some operating systems may require more memory)
- 1 GB hard disk
- 16-bit SVGA adapter with 2MB RAM
- Network interface card (10 Mbps)
- Parallel printer port and serial port
- Keyboard, monitor, mouse, 3.5-inch disk drive, CD-ROM drive
- Windows 98SE, Windows NT 4.0 workstation (SP 6), Windows 2000, or Windows XP
- Minimum system requirements should not run Visio / VisualLogic



Ottawa • Toronto • Halifax • Montréal
www.vcicontrols.ca