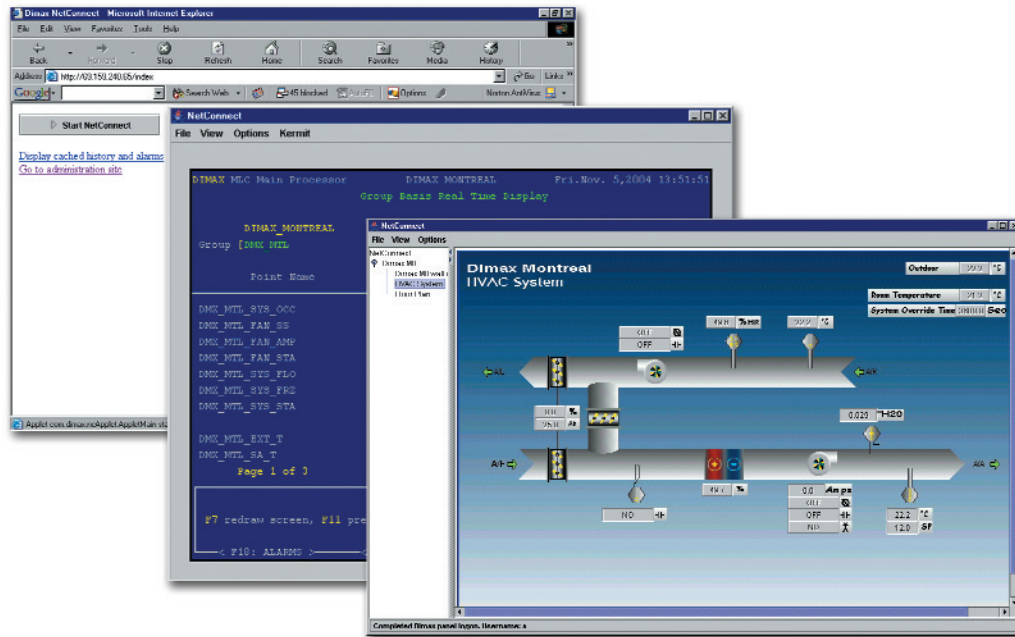


Dimax NetConnect Interface Device

Two applications... no need to install new software on your PC!



The increased availability of IP networks has led to a need to connect to systems using standard LAN and WAN protocols. Regular phone lines are becoming obsolete. For customers making the technology jump to IP networks, Dimax offers the NetConnect Interface Device. NetConnect allows the Dimax user to run a terminal emulator session or graphics using a standard web browser, connecting via IP address directly to the NetConnect device. The device is connected to the Dimax System by its standard RS-232 cable. Depending on the Dimax System configuration, multiple Interface Devices may be used to increase the number of concurrent sessions with the Dimax System.

Requirements

- 1 serial port connection per NetConnect device to Dimax MLC-32 with version D5.3.2 or higher firmware, 9 pin female RS232
- Dimax setup of alarms, histories and trends for display through device, if desired
- 110VAC/1/60 outlet at 1 amp
- 10-40 degrees Celsius, 10-90% RH (non-condensing) environment

Specifications

- Advanced RISC (ARM720T) CPU, 60 MHz
- 1 MB Flash Memory for Boot Loader
- 32 MB SDRAM, 32 MB Disk-on-chip
- 2 RS232 ports, 9 pin, male
- 5 V DC, 1 Amp Peak Power
- 2 Ethernet 10 Base-T
- Aluminum Housing
- Power and diagnostic LEDs

Simplifying The User Interface