

# Spike: A Windows Terminal Emulator

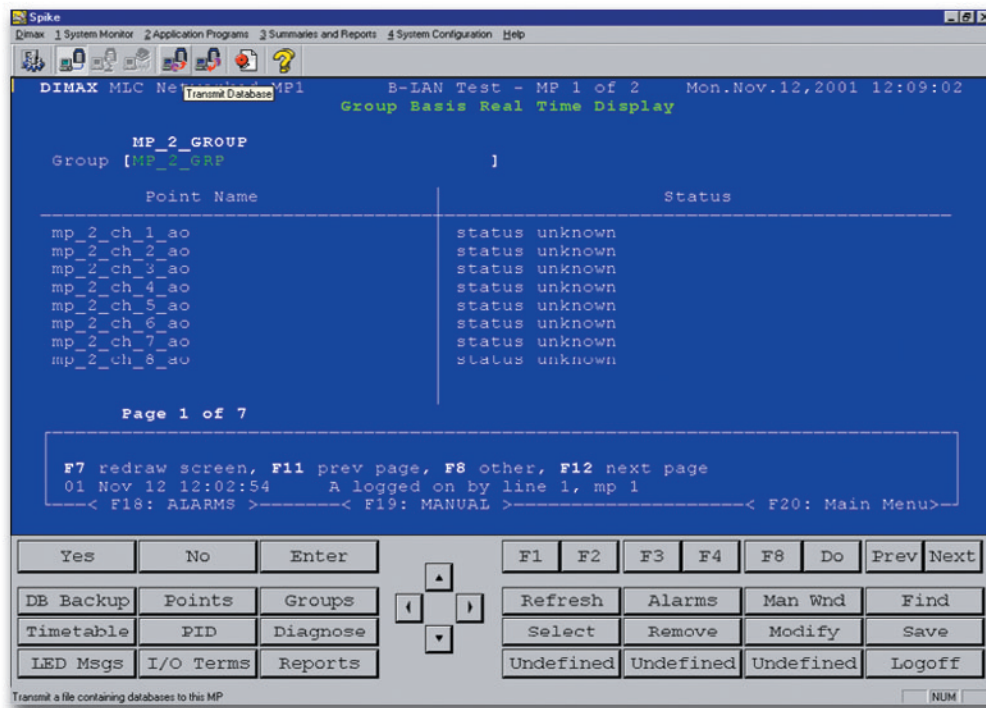
## Introducing Spike

Spike is a 32-bit terminal emulator from Dimax designed for use in Microsoft Windows environments. It has the look and feel of the older terminal emulators, with added features to make it convenient and easy to use.

This basic software can help you keep track of your Dimax System from the comfort of your desk. Spike can save your alarm messages and panel information. It allows you to set up phone numbers for remote monitoring. The new Spike networking facility makes the Dimax System accessible through LAN/WAN or Internet connectivity. Building management is no longer restricted to the boiler room.

## Features

- Uses standard Windows interfaces, including pull down style menus for all screens in the Dimax System
- Quick and easy to use
- Stores alarm messages on your hard disk
- Keeps phone numbers and modem settings for remote site monitoring
- Can be used across a LAN, through SpikeServer
- User configurable size and colour settings
- User configurable commands and buttons
- Pop up menus with common commands for fast help
- DCL reference screens to help you with programming



### SOFTWARE SPECIFICATIONS

- Spike, and SpikeServer (if operating over a LAN)
- Windows 95, 98, NT (v. 4.0), ME, 2000, or XP Operating System

### DIMAX HARDWARE REQUIREMENTS

- MP-900 or MLC-32
- 1 communication port free for connection to PC
- Dimax panel data cable

### PC REQUIREMENTS (MINIMUM)

- Pentium-based P.C., 200 MHz
- 32 Megabytes Main Memory (48 MB with NT/2000)
- 15 MB free on Hard Disk
- CDRom drive
- 15" VGA Colour Monitor and Controller
- Mouse
- Enhanced Keyboard
- 1 serial port for connection to Dimax System